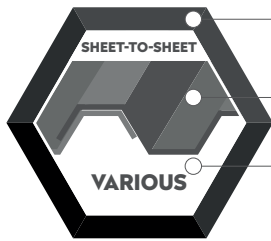




GAS-TIGHT BLIND RIVET CUP ALUMINIUM / SS A2

APPLICATION



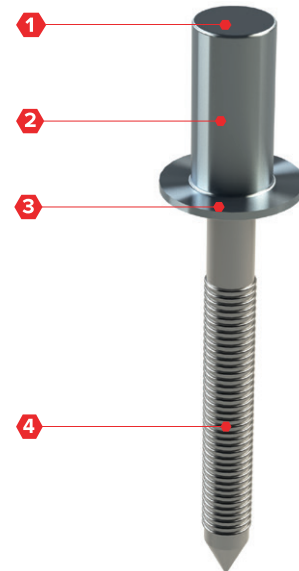
Aluminium / SS A2

Sheet-to-sheet

Various

SPECIFICATION

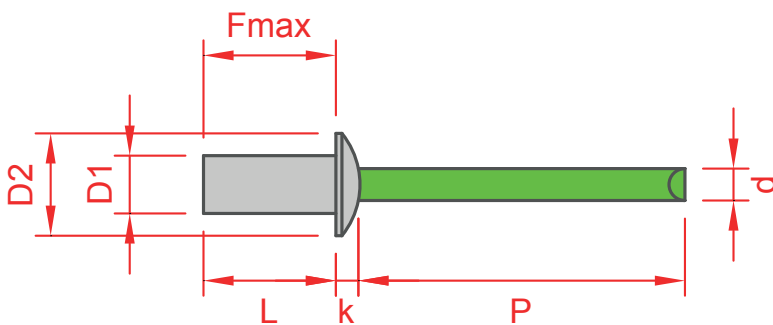
- 1 Mandrel head (Aluminium)
- 2 Rivet body (Aluminium)
- 3 Nail head (Aluminium)
- 4 Mandrel (SS A2)



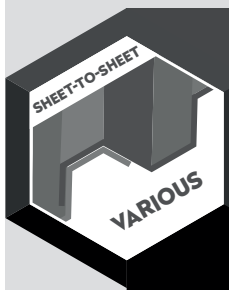
OPTIONS

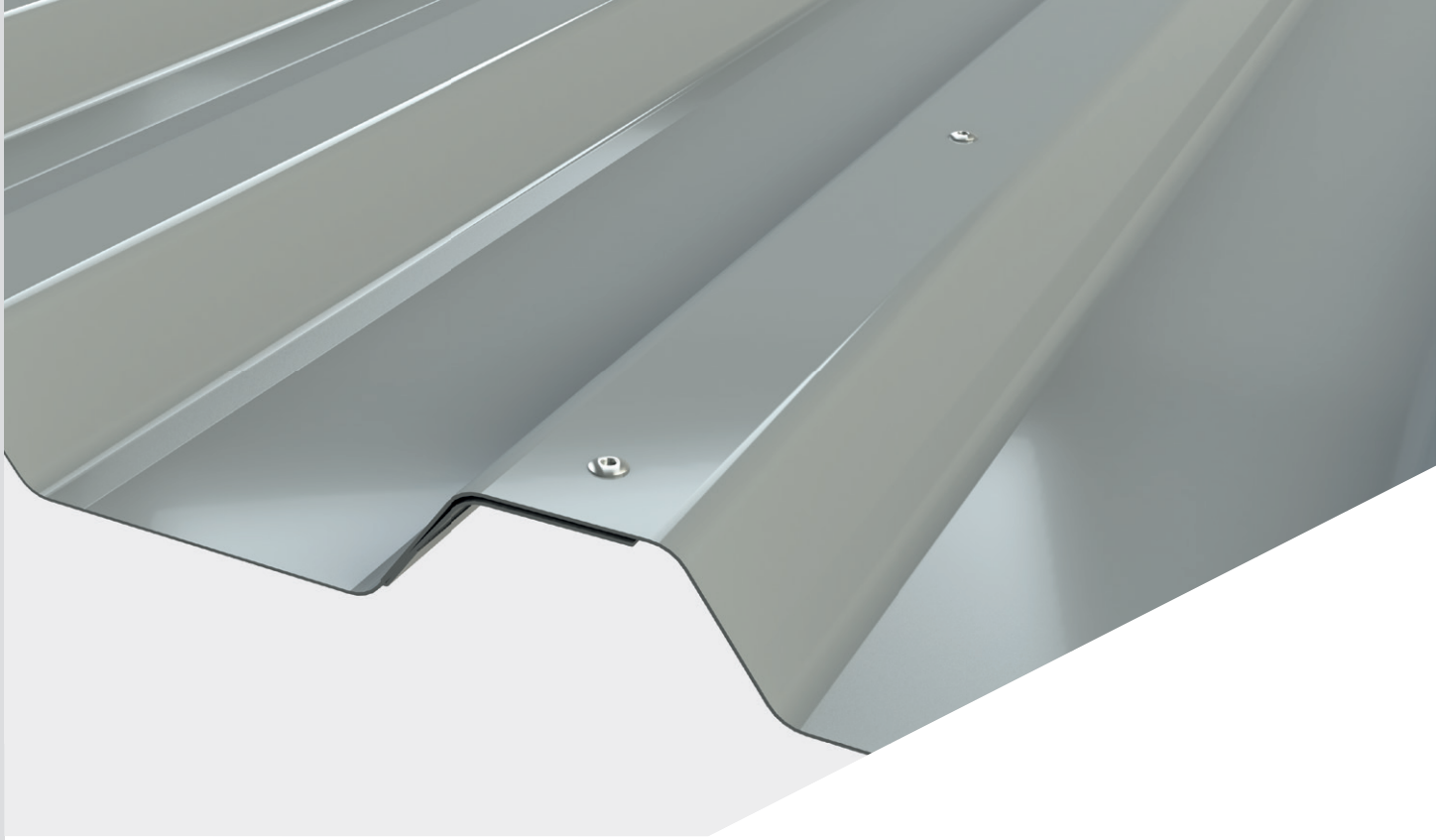
- 1 Powder coated in any desired RAL colour

SECTION



STITCHING SCREWS - ALUMINIUM / SS A2

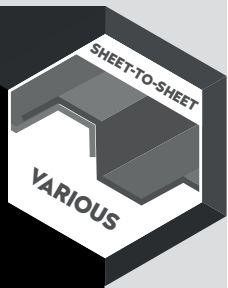




APPLICATION

Using the table below you can easily determine the sufficient blind rivet length.

Size	Thickness (mm)														Article code	
	0,5	1,0	2,0	3,0	4,0	5,0	6,0	7,0	8,0	9,0	10,0	12,0	14,0	16,0		
4,0x8 mm	██████████															20100040008





GAS-TIGHT BLIND RIVET CUP ALUMINIUM / SS A2

DIMENSIONS

Product	D1	D2	d	P	k	L	Pre-drill
Gas-tight blind rivet CUP, 4,0 x 8 mm, AL/A2	4,0	8,0	2,2	≥ 27 mm	1,7	8,0	4,1

MECHANICAL PROPERTIES

Product	Shear force	Tensile strength
Gas-tight blind rivet CUP, 4,0 x 8 mm, AL/A2	1700 N	2240 N

ORDER INFORMATION

Product	Size	Packaging	Article code
Gas-tight blind rivet CUP, 4,0 x 8 mm, AL/A2	4,0 x 8 mm	500 pcs	20100040008

Other types and measurements available on request.

CERTIFICATEN



QUALITY
CONFIRMED

