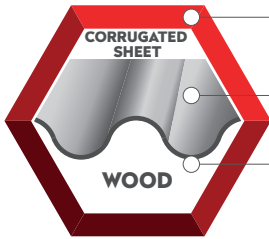




CORRUGATED SHEET SCREW A2/H PLUS DP2

APPLICATION



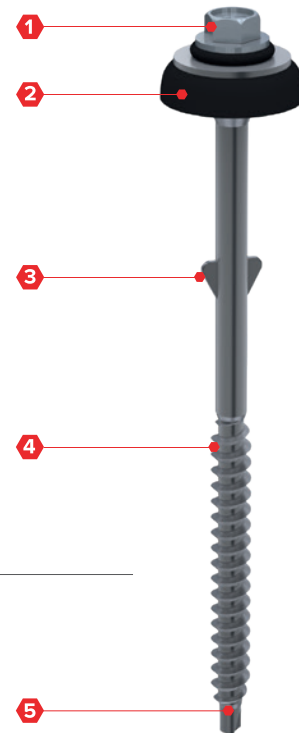
SS A2 304

Corrugated Sheet

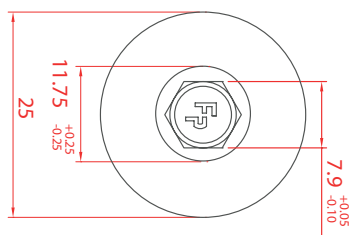
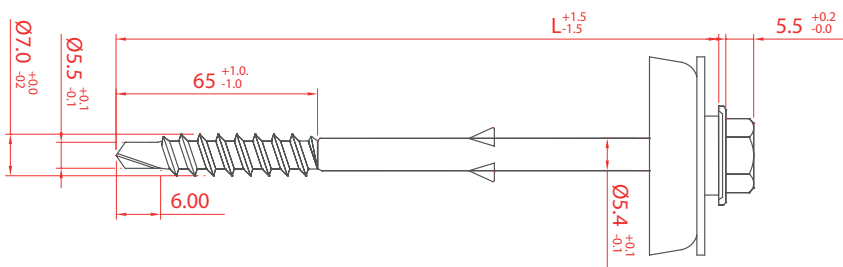
Wood

SPECIFICATION

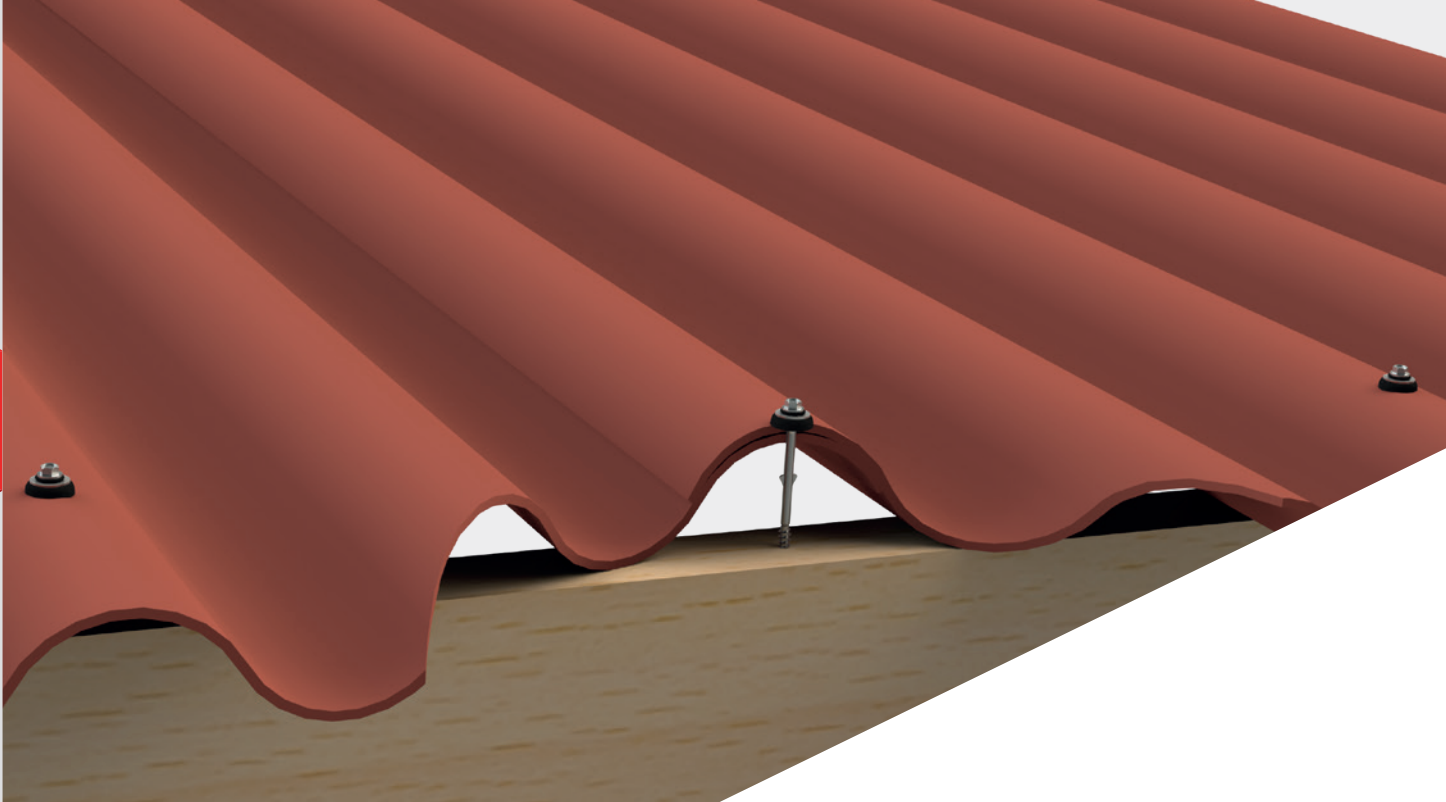
- 1 Head style 5/16" (8 mm)
- 2 EPDM with SS washer 25 mm
- 3 Wings to enlarge drilling hole in corrugated sheet
- 4 Thread for substructure wood
- 5 Drilling point 2 reduced



SECTION



CORRUGATED SHEETS - WOOD - SS A2 304



APPLICATION

Using the table below you can easily determine the sufficient screw length.

Size	Insulation thickness (mm)													Article code	
	20	40	60	80	100	120	140	160	180	200	220	240	260		280
7,0 x 120 mm	Without insulation													1502027012025	
7,0 x 140 mm	0 - 20 mm														1502027014025
7,0 x 160 mm		20 - 40 mm													1502027016025
7,0 x 180 mm			40 - 60 mm												1502027018025
7,0 x 200 mm				60 - 80 mm											1502027020025
7,0 x 220 mm					80 - 100 mm										1502027022025

ORDER INFORMATION

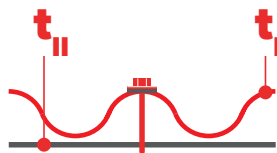
Product	Description	Size	EPDM	Packaging	Article code
Corrugated Sheet Screw	SS A2 304, A2/H Plus	7,0 x 120 mm	25 mm	100 pcs/box	1502027012025
Corrugated Sheet Screw	SS A2 304, A2/H Plus	7,0 x 140 mm	25 mm	100 pcs/box	1502027014025
Corrugated Sheet Screw	SS A2 304, A2/H Plus	7,0 x 160 mm	25 mm	100 pcs/box	1502027016025
Corrugated Sheet Screw	SS A2 304, A2/H Plus	7,0 x 180 mm	25 mm	100 pcs/box	1502027018025
Corrugated Sheet Screw	SS A2 304, A2/H Plus	7,0 x 200 mm	25 mm	100 pcs/box	1502027020025
Corrugated Sheet Screw	SS A2 304, A2/H Plus	7,0 x 220 mm	25 mm	100 pcs/box	1502027022025



CORRUGATED SHEET SCREW A2/H PLUS DP2

CORRUGATED SHEET SCREW A2/H PLUS 7,0 x L - DP2

Materials	
Screw	Stainless steel 1.4301 (A2) – conform EN ISO 3506
Washer	Stainless steel 1.4301 (A2) – conform EN ISO 3506
Material A (t_I)	Steel Quality S280GD, S320GD and S350GD - conform EN 10346
Material B (t_{II})	Steel Quality S235 – conform 10025-2 and S280GD, S320GD and S350GD - conform EN 10346
Drilling capacity	Wood



		t_{N1} [mm]	L_{eff} [mm]
			36
	$N_{R,k}$ [kN]	Eternit Ecolor	1,28
		SVK Neptunus	1,90

Note

- Above mentioned values are based on the technical approvals of the corrugated sheet producer. Limitations and application according the mentioned technical approval.

CERTIFICATES



