



ENG

STEEL SPECIALIST
FOR PARTS, COMPONENTS,
ASSEMBLIES AND SMALL
STRUCTURES

A close-up photograph of a CNC machine's cutting tool, a small metal drill bit, positioned above a dark metal workpiece. The tool is actively cutting, and a shower of bright orange and yellow sparks is being ejected from the bottom of the workpiece. The background is dark and out of focus.

**KS
PARTS AND
COMPONENTS**

**TAILORED PRODUCTS
YOU REALLY WANT.**

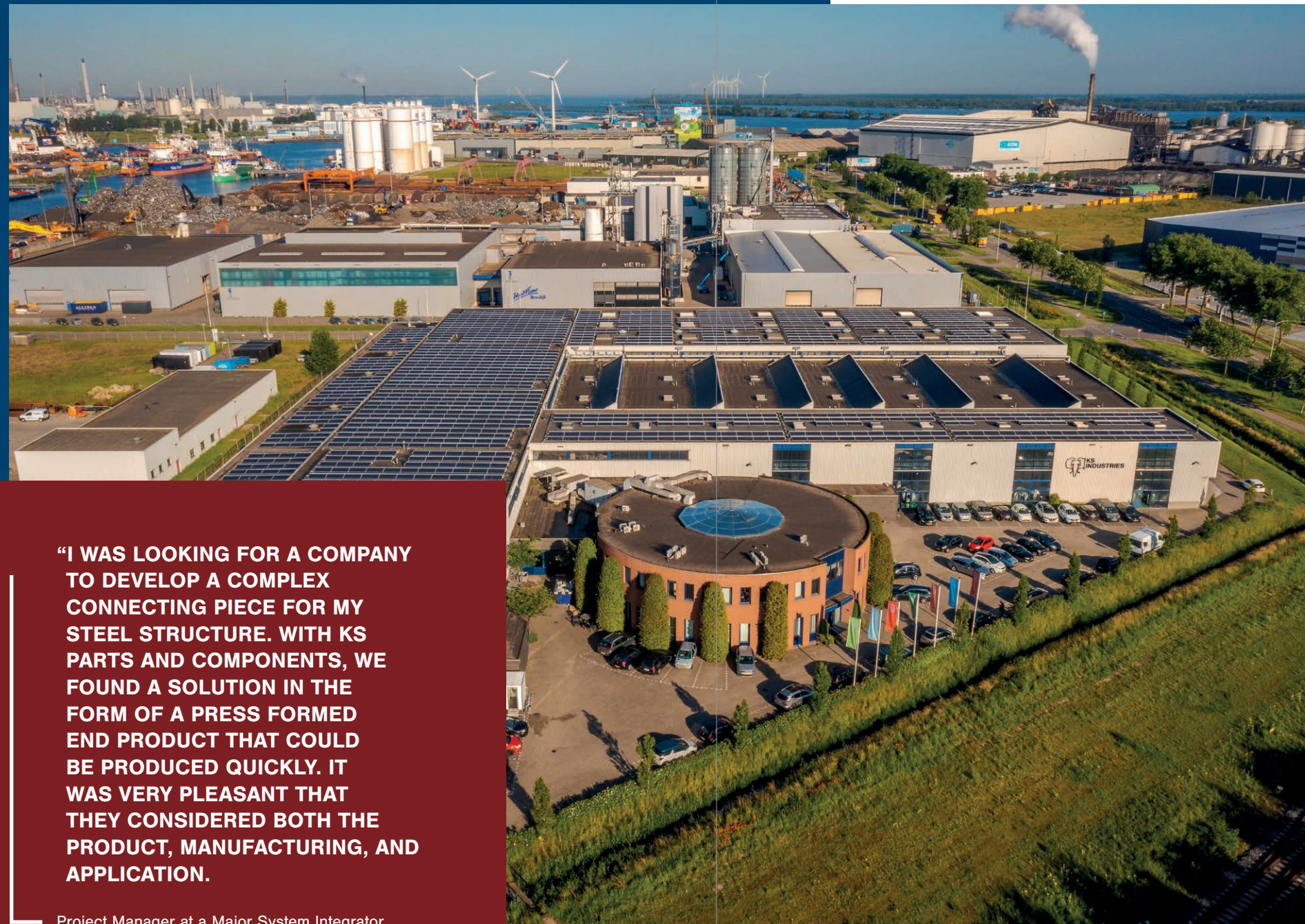
A NEW GENERATION OF STEEL SOLUTIONS

With 50 years of experience in the steel processing industry, KS Parts and Components guarantees that you always receive the best-engineered and produced solutions. We're open to collaborative discussions and ready to work alongside you in finding solutions." Our team possesses in-depth knowledge and expertise in the areas of product engineering, manufacturing, and assembly. From an efficiently organized production location with a *state-of-the-art* machine park and motivated professionals, we ensure that you get what you desire. Whether it's large series components or special, tailor-made pieces, we conceive, design, and create them. And if you wish, we also handle storage and logistics.

Working with KS Parts and Components means:

- Smart and (cost) efficient solutions
- High-quality products
- Fast production and delivery

KS Parts and Components is part of KS Industries, a group of specialized enterprises with innovators, creators, controllers, and builders in the steel processing industry. All companies within KS Industries strive for the most sustainable production processes, including the use of self-generated sustainable energy and the application of sustainable steel. Alongside our colleagues and clients, we work towards minimal CO₂ emissions.



“I WAS LOOKING FOR A COMPANY TO DEVELOP A COMPLEX CONNECTING PIECE FOR MY STEEL STRUCTURE. WITH KS PARTS AND COMPONENTS, WE FOUND A SOLUTION IN THE FORM OF A PRESS FORMED END PRODUCT THAT COULD BE PRODUCED QUICKLY. IT WAS VERY PLEASANT THAT THEY CONSIDERED BOTH THE PRODUCT, MANUFACTURING, AND APPLICATION.

Project Manager at a Major System Integrator

KS PARTS AND COMPONENTS IN A NUTSHELL

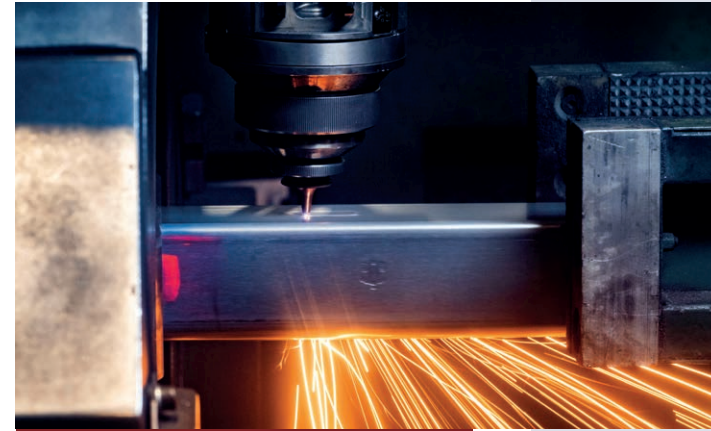
- 1** ALL EXPERTISE UNDER ONE ROOF: FROM CHALLENGE TO TECHNICAL SOLUTION TO DELIVERY
- 2** ALMOST EVERY TYPE OF STEEL AVAILABLE, S350, HX420 UP TO STAINLESS STEEL. ON REQUEST STEEL IN ZM(MAGNELIS) AND/OR GREEN STEEL.
- 3** PRODUCTION HALL OF 9,800M2 FOR PRODUCTION AND STORAGE, PROTECTED AGAINST WEATHER AND POLLUTION
- 4** SMALL, MEDIUM, AND LARGE SERIES WORK AND ASSEMBLIES IN MATERIALS INCLUDING STEEL AND STAINLESS STEEL.
- 5** PROJECT EXPERIENCE AND LOGISTICAL RELIABILITY.
- 6** MULTIDISCIPLINARY, MODERN PRODUCTION FACILITY, AND IN-HOUSE TOOL SHOP

OUR TECHNICAL COMPETENCES

THE STEEL PROCESSING MARKET IS DYNAMIC AND FULL OF OPPORTUNITIES. AT KS PARTS AND COMPONENTS, WE ENSURE THAT WE STAY AHEAD IN DEVELOPMENTS. WE INVEST IN NEW TECHNIQUES SO THAT WE CAN CONTINUE TO REALIZE INNOVATIVE PRODUCT SOLUTIONS FOR VARIOUS SECTORS. YOU'LL FIND OUR PRODUCTS IN DIVERSE APPLICATIONS IN SOLAR AND WIND ENERGY, CARPORTS, BODYWORK CONSTRUCTION, GREENHOUSE CONSTRUCTION, FACADE CLADDING, WAREHOUSING, FENCING, STEEL COLUMNS, AND MORE.

In KS Parts and Components, you'll find a multidisciplinary production company with an eye for functional design and practical applicability. This results in a market-oriented pricing structure for large, medium, and small production orders.

Challenge us with your problem; we enjoy brainstorming with you!



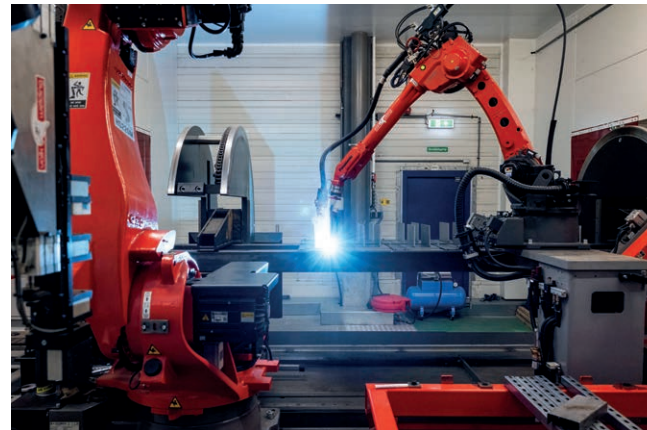
TUBE LASER CUTTING



PRESS FORMING



MANUAL WELDING



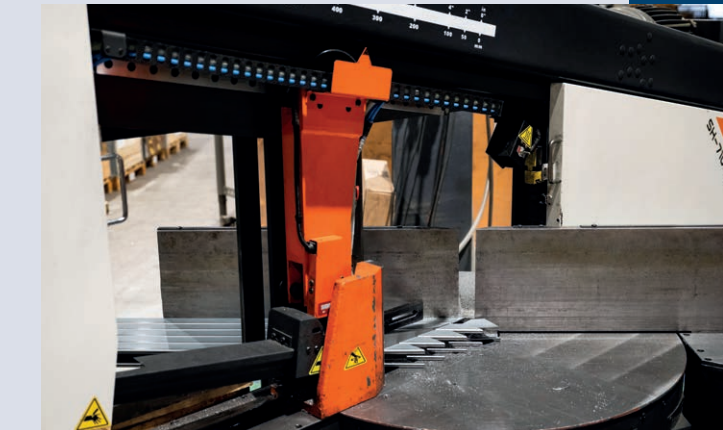
ROBOT WELDING



SPOT WELDING



PRESS BRAKE



SAWING

“I NEVER THOUGHT THAT THE IDEA I HAD CONCEIVED COULD ACTUALLY BE ACHIEVED IN STEEL. BUT WITH THE PEOPLE FROM KS PARTS AND COMPONENTS, THIS WAS MADE POSSIBLE. BY INTELLIGENTLY COMBINING VARIOUS PRODUCTION TECHNIQUES, THEY WERE ABLE TO BRING A WELL-CONCEIVED END PRODUCT INTO PRODUCTION.”

Engineer at a Bodywork Construction Company



SECTORS

Steel is utilized in numerous markets and industries due to its strength, versatility, and workability. Many of our solutions and products are applied across diverse sectors. We have extensive experience in conceptualizing, engineering, and producing parts and components for, among others:



BODYWORK CONSTRUCTION



SOLAR



GREENHOUSE CONSTRUCTION



AGROTECHNOLOGY



SMALL CONSTRUCTION



WAREHOUSING / HALL CONSTRUCTION

EEN GREEP UIT ONS MACHINEPARK



HACO TANDEM PRESS BRAKE

Bending capacity: 8500mm x 500 tons
Can be used in tandem or independently, with two sections of 4100mm each
Tandem bending capacity: 2x 250 tons
Suitable for large series and single pieces ranging from 0.5mm to 8mm in steel and stainless steel



ADIGE TUBE LASER

8500mm input
7390mm output
Cutting thickness up to 8mm with oxygen
Cutting thickness up to 6mm with nitrogen
Clamping range for round tubes: 220mm
Clamping range for square tubes: 180mm
Cutting of open profiles possible when square-clamped
Cutting profiles with varying cross-sections possible when square-clamped
Suitable for both large series and single pieces



COSEN SAW MACHINE

Usage length: 15 meters
Clamping range: 650x260mm
Tolerance for single-piece cutting: +/- 0.5mm
Bundle cutting is also possible

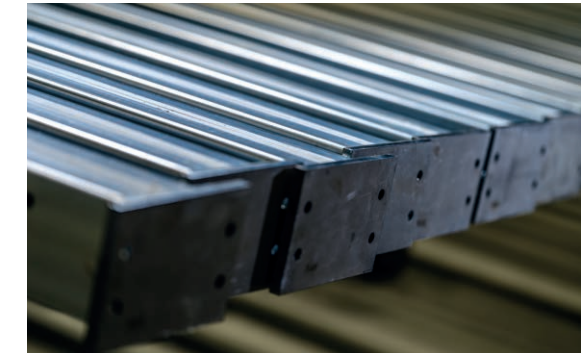
SPOT WELDING MACHINE

Capability to spot weld lengths up to 12 meters.



WELDING ROBOT

Panasonic robot, Valkwelding system
15 meters in-feed and out-feed
Clamping range of 400mm with rotator on rail and a 270° rotation range
Welding plates to profiles on the end face and in all directions on the profile
Product manipulator
Second robot arm for material supply
Workpieces in medium and large series
Plasma cutting with a robot, quick-change system, in all shapes in combination
All in one processing cycle



MANUAL WELDING KEMPI

4 Kempi welding machines with torch extraction
4 point extractions for the welding machines
Ability to weld pre-galvanized material
Welding of single pieces and large series
Welding of intricate workpieces"

YADON 200 TON PRESS WITH FRONT-END

Working surface: 2200x850
Lengthwise and crosswise output options
Robotic output for stamped parts or on a conveyor belt
Mechanized output for stamped parts also possible
Suitable for medium and large series
Robotic system (Fanuc)



KS PARTS AND COMPONENTS B.V.

Office

Apolloweg 1
4782 SB Moerdijk (NL)

Production

Oostelijke Randweg 30
4782 PZ Moerdijk (NL)

+31 168 38 62 53

General: info@kspartsandcomponents.com

RFQ: sales@kspartsandcomponents.com

www.kspartsandcomponents.com

