

Model 600SJ

Reach Specifications

Platform Height	60 ft 5 in. (18.42 m)
Horizontal Outreach	50 ft 5 in. (15.37 m)
Swing	360° Continuous
Platform Capacity—Restricted	500 lb (227 kg)
Platform Capacity—Unrestricted	500 lb (227 kg)
Platform Rotator	180° Hydraulic

Dimensional Data

A. Platform Size	36 x 96 in. (0.91 x 2.44 m)
B. Overall Width	7 ft 11 in. (2.41 m)
C. Tailswing (working condition)	3 ft 9 in. (1.14 m)
D. Stowed Height	8 ft 5 in. (2.57 m)
E. Stowed Length	31 ft (9.45 m)
F. Wheelbase	8 ft 1 in. (2.46 m)
G. Ground Clearance	12 in. (30 cm)
Gross Vehicle Weight ¹	26,300 lb (11,930 kg)
Max. Ground Bearing Pressure	70 psi (4.9 kg/cm ²)

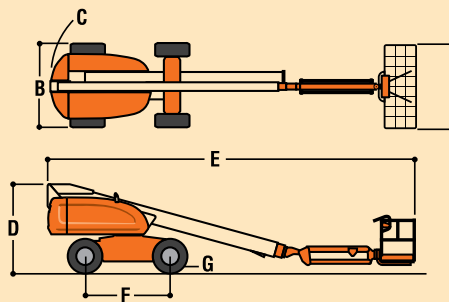
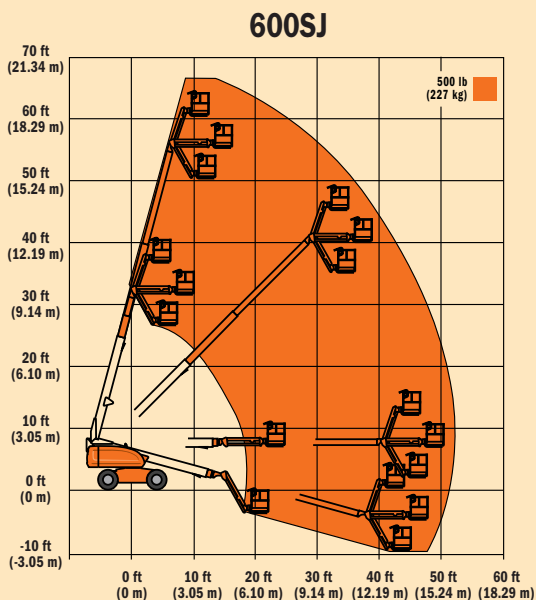
Chassis

Drive Speed 2WD	4.25 mph (6.8 kmph)
Drive Speed 4WD	4.25 mph (6.8 kmph)
Gradeability 2WD	30%
Gradeability 4WD	45%
Tires	15 x 19.5 pneumatic
Axle Oscillation	8 in. (20 cm)
Turning Radius, (Inside/Outside)	
600S 2WS	11 ft 4 in./17 ft 9 in. (3.45 m/5.41 m)
600S 4WS	5 ft 5 in./11 ft 4 in. (1.65 m/3.45 m)

Power Source

Dual Fuel Engine, Ford LRG-425	82 hp (61 kW)
Diesel Engine, Deutz F4M1011F	65 hp (48 kW)
Diesel Engine, Caterpillar 3044C	63.3 hp (47.2 kW)
Fuel Tank Capacity	40 gal (151 L)
Hydraulic Reservoir	32 gal (121 L)
Auxiliary Power	12V DC

1. Certain options or country standards increase weight.



Standard Features

Platform: 36 in. x 96 in. (0.91 m x 2.44 m)
 SkyPower™ Package
 Oscillating Axle
 Inward Swinging Gate
 Hydraulic Platform Rotator
 AC Receptacle in the Platform
 5 Degree Tilt Alarm/Indicator Light
 Swing-Out Engine Tray
 12V DC Auxiliary Power
 Hourmeter
 Control ADE™ System
 All Motion Alarm Lifting Lugs